



## **EDGARTOWN RACE WEEKEND**

### ***'ROUND-THE-ISLAND RACE***

*July 30, 2016*

*The Edgartown Yacht Club  
is the Organizing Authority*

## **SAILING INSTRUCTIONS**

### **1 RULES**

- 1.1 The 'Round-the-Island Race will be governed by the rules as defined in *The Racing Rules of Sailing*; the PHRF New England Rule, NEMA or the IRC Rule, the class rules for eligible one-design classes and the ISAF Special Regulations for offshore and ocean racing category 4 (including the US Prescriptions to those regulations and subject to exceptions made by the Race Committee).
- 1.2 The requirement is waived for storm and heavy weather sails. This changes ISAF Offshore Special Regulations Section 4.26.
- 1.3 There will be no limitations on crew number or weight. This changes IRC Rule 22.4.
- 1.5 PHRF Classes will be scored Time-on-Distance.
- 1.6 Rule 52 is changed to allow powered winches in the non-spinnaker division.
- 1.7 Rule 52 is changed to allow powered winches and autopilots in the Double-Handed class.
- 1.8 Rule 64.1 is changed to include: "The protest committee may impose suitable penalties other than disqualification, including time penalties, for breaches of a rule."

## **2 NOTICES TO COMPETITORS**

- 2.1 Notices to competitors will be posted on the official Race Committee notice board located in the entrance to the main hall of the Edgartown Yacht Club (the "Club").
- 2.2 A skippers' meeting will be held at 1730 hrs Friday, July 29, 2016.

## **3 CHANGES TO SAILING INSTRUCTIONS**

Any changes to the Sailing Instructions will be posted before 0600 hrs on the day it will take effect, except that any change to the schedule of the Race will be posted by 2000 hrs on the day before it will take effect.

## **4 SIGNALS MADE ASHORE**

- 4.1 Signals made ashore will be displayed from the Club station mast.
- 4.2 When flag AP is displayed ashore, "1 minute" is replaced with "not less than 1 hour" in the race signal AP.
- 4.3 Code Flag L ashore means that there has been a change in the Sailing Instructions.

## **5 SCHEDULE OF RACE**

- 5.1 The Race will be held on Saturday, July 30, 2016, with the first warning signal at 0800 hrs.
- 5.2 The Race Committee will publish an amendment to these Sailing Instructions listing the class breakdown, the boats assigned to each class, the class flags and the start sequence. This amendment will be posted on the official bulletin board at the entrance to the main hall by 1730 hrs Friday, July 29, 2016. The responsibility for assignment of a boat to a class rests solely with the Race Committee.

## **6 CLASS FLAGS**

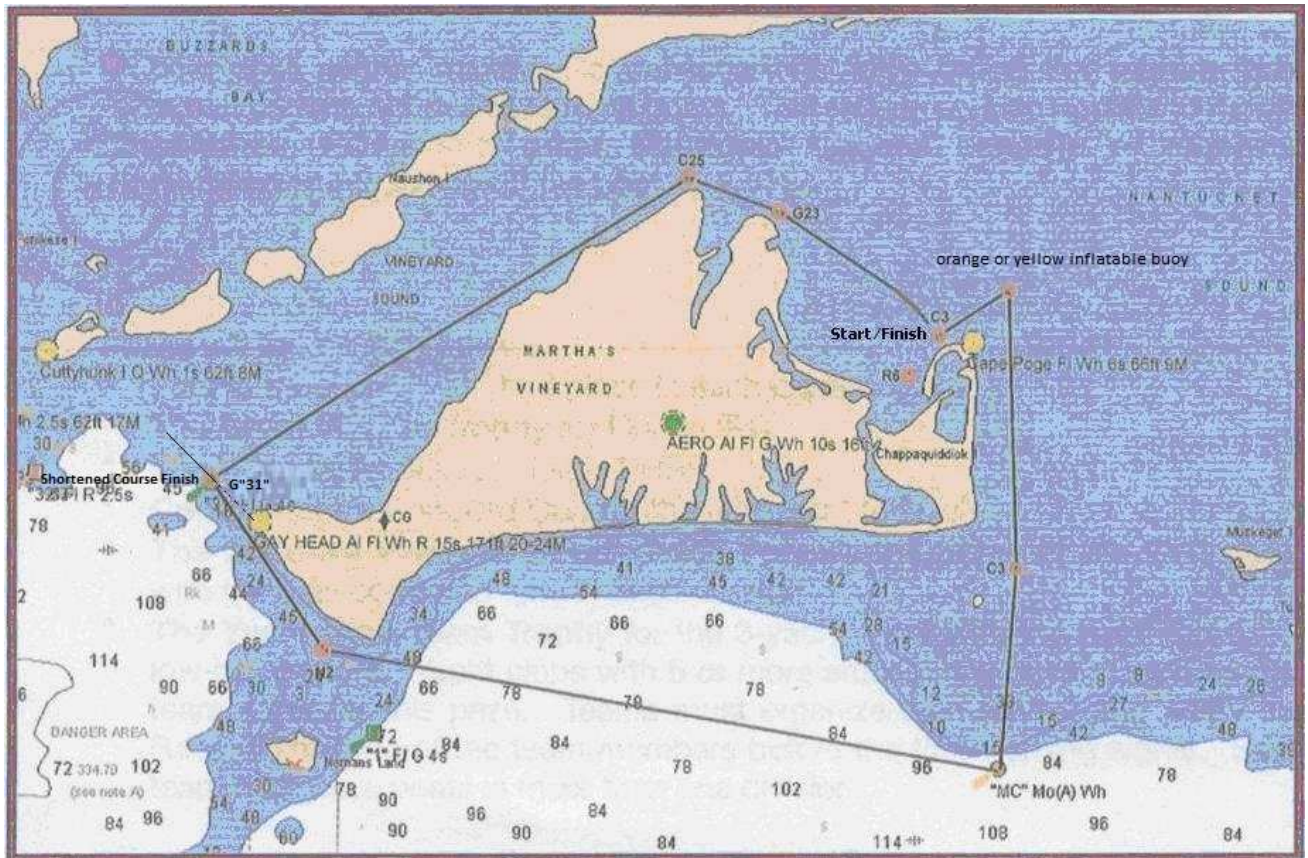
- 6.1 Each boat will fly from her stern at least five feet above the deck an international code flag numeral pennant corresponding to the number of the class to which she has been assigned. Boats lacking a backstay will do their best to comply. The pennant will be flown from the time of the warning signal for the relevant class until the boat has finished and cleared the finishing area. Only the Race Committee may protest a boat for breaking this requirement. This changes rule 60. The penalty for breaking this requirement will be an adjustment increasing her corrected time for scoring purposes by seven minutes. This changes rule A4.
- 6.2 Racing boats shall not fly an ensign. Only the Race Committee may protest a boat for breaking this requirement.

## **7 RACING AREAS**

The Race will be around the island of Martha's Vineyard and will be sailed in Nantucket Sound, the Atlantic Ocean, and Vineyard Sound.

## **8 THE COURSE**

The course will be a clockwise circumnavigation of Martha's Vineyard, from Edgartown. The distance is 56.0 miles. The approximate course is depicted in the chart below. Competitors are reminded that the course passes adjacent to several shoals and reefs. Caution should be exercised throughout the Race with special attention given in the area east and south of Wasque Point on the southeast corner of Chappaquiddick Island.



## 9 MARKS

After the start, the following are the marks of the course in sequence. All marks will be left to starboard.

- Edgartown C"3" Start
  - Inflatable Yellow Mark (approximately 1.3 NM NNE of Cape Poge) (Approximate position: 41 26.4 N, 070 26.2 W)  
Exact coordinates will be posted on the notice board.
  - Mutton Shoal G C "3"
  - RW "MC", Mo(A)
  - Squibnocket Point N "2"
  - Devil's Bridge G "31"
  - West Chop C "25"
  - East Chop G "23"
  - Edgartown C "3" Finish (RC signal boat to starboard, C "3" to port)

## 10 THE START

- 10.1 The race will be started using rule 26, with classes starting in the order listed in the amendment.
- 10.2 The starting line will be between a staff displaying an orange colored flag on the Race Committee signal boat at the **port** end and C "3" at the **starboard** end of the line.
- 10.3 Boats whose warning signal has not been made will keep clear of the starting area and of all boats whose warning signal has been made.

- 10.4 A boat starting later than five minutes after her starting signal will be scored Did Not Start (DNS) without a hearing. This changes rule A4.
- 10.5 Prior to the first warning signal each boat will contact the Race Committee signal boat on VHF channel 77 and check in by announcing to the Committee her name, class, and sail number. The Race Committee will respond with the sail number heard.
- 10.6 A boat on the course side of the starting line at her starting signal that does not return to the pre-start side of the starting line and properly *start* will be penalized by an adjustment increasing her corrected time for scoring purposes by seven minutes, provided, however, that, any such boat which is more than two of her boat lengths on the course side at her starting signal and does not return to properly start will be scored OCS. This changes rule A 4.2 and 30.1.

## **11 CHANGE OF COURSE AFTER THE START**

- In the event of a shortened course, the following procedures will be used (this changes rule 32):
- 11.1 The Race Committee will periodically broadcast on VHF 72 from the Gay Head Lighthouse the intention to shorten the course. The class or classes for which the shortened course applies will also be broadcast.
  - 11.2 The shortened course finish will be at the western end of Martha's Vineyard at the extension of a line formed between the Gay Head Lighthouse and the Gay Head Lighted Gong Buoy #31 that marks Devils Bridge. Those two points form a bearing of approximately 140 degrees magnetic from the buoy to the lighthouse.
  - 11.3 Whether visual conditions require it or not, all boats shall identify themselves (Yacht Name, Sail Number and Class) to the Race Committee by calling on VHF Channel 72 when she is 10 minutes from the Gay Head Gong Buoy 31.
  - 11.4 The Gay Head Buoy #31 will be left to STARBOARD and must be passed within 75 yards.
  - 11.5 A yacht crossing the designated line at night shall use a bright light to illuminate her sail numbers. (A handheld flashlight will not be sufficient for this purpose.)
  - 11.6 The yacht shall also call the Race Committee on VHF 72 when reaching the extension of the line formed by Gay Head Lighthouse and Gay Head Gong Buoy 31 and record her time. The Race Committee will also record each yacht's finish time. If there is a discrepancy between the times, the Race Committee's recorded time will be used.
  - 11.7 A boat, having taken her own time at the Gay Head Buoy will report her time to the Race Committee at the Race Office in the Edgartown Yacht Club Sailing Office either in person or by telephone within two hours of her finish at (508) 627-4364). A boat failing to comply with this requirement will be penalized by having 30 minutes added to her elapsed time without a hearing. This changes RRS 63.1, A4 and A5.
  - 11.8 The shortened course is 35.04 nm.
  - 11.9 Scoring for boats finishing at the Shortened Course Finishing Line shall have their corrected times multiplied by 1.60 for the Team Award and for Division trophies.

## **12 THE FINISH**

- 12.1 The finishing line will be between a staff displaying a blue flag on the Race Committee signal boat at the starboard end of the line and the course side of Edgartown buoy C "3" at the port end.
- 12.2 Boats finishing will hail the Race Committee on VHF Channel 72 five minutes before their estimated finishing time, stating her name and sail number.

- 12.3 After sunset the Race Committee boat at the finish line will display an anchor light and the Club's night signal, red over green over red. Boats finishing after sunset will illuminate their sail numbers on the starboard side while crossing the finishing line and for at least 30 seconds following the finishing signal from the Race Committee boat.
- 13 WITHDRAWAL OR RETIREMENT**  
Any boat withdrawing before the start or retiring during the race for any reason shall notify the Race Committee on VHF Channel 72 or by telephone at (508) 627-4364.
- 14 PENALTY SYSTEM**  
Rule 44.3, Scoring Penalty, will be in effect.
- 15 TIME LIMIT**  
Boats failing to finish by 2400 hrs on Saturday, July 30, 2016, will be scored Did Not Finish (DNF) without a hearing. This changes rule 35.
- 16 PROTESTS AND REQUESTS FOR REDRESS**
- 16.1 Rule 61.1 is modified to also require that protesting boats notify the Race Committee within five minutes of finishing or retiring of their intention to protest. Such notification will include the sail number of the boat being protested.
- 16.2 Protests and requests for redress will be written on forms available at the EYC Race Office and delivered there before 0800 hrs on Sunday July 31, 2016.
- 16.3 Protests and requests for redress will be heard in approximately the order in which they are received, beginning at 0830 hrs on Sunday, July 31, 2016.
- 17 SAFETY**
- 17.1 Refer to the registration packet insert for information concerning medical emergency protocol and emergency contact information.
- 17.2 The Chappaquiddick Ferry shall be considered "Restricted in her ability to maneuver," as defined in rule 18 of the International and Inland Navigation Rules, and as such has the right-of-way in all circumstances.
- 18 RADIO COMMUNICATIONS**
- 18.1 The Double-Handed class may make intra boat communications while racing. This changes rule 41.
- 18.2 Competitors equipped with AIS are encouraged to transmit position.
- 19 PRIZES**  
Prizes will be presented in the main hall of the EYC beginning at 1000 hrs on Sunday, July 31, 2016.
- 20 DISCLAIMER OF LIABILITY**  
Competitors participate in the Race entirely at their own risk. See rule 4, Decision to Race. The organizing authority will not accept any liability for material damage or personal injury or death sustained in conjunction with or prior to, during, or after the Race.

